



NIRS

AUCD's National Information Reporting System

In-Person NIRS 2023 Data Coordinator's Annual Meeting

November 5th, 2023



Staff Introductions



Brandon Lewis, MPH, CPH
Data Support Manager



Oksana Klimova, M.Sc. Appl. Math
Director of Web Services



Presenter



**Michelle Tissue, MPH (she/her)
Chief (Acting)**

Public Health Workforce Development Branch
Division of MCH Workforce Development



Agenda

3:30 Welcome and Introductions

3:45 Updates from the Maternal & Child Health Bureau (MCHB)

4:05 Upcoming changes for NIRS Search, NIRS Resources page, & AUCD Online Directory

4:20 Announcements

4:35 Break

4:50 Breakout Sessions

5:40 Report Out and Closing Remarks



Discretionary Grants Information System (DGIS) Updates

November 2023

Michelle Tissue
Division of MCH Workforce Development
Maternal and Child Health Bureau (MCHB)

Vision: Healthy Communities, Healthy People



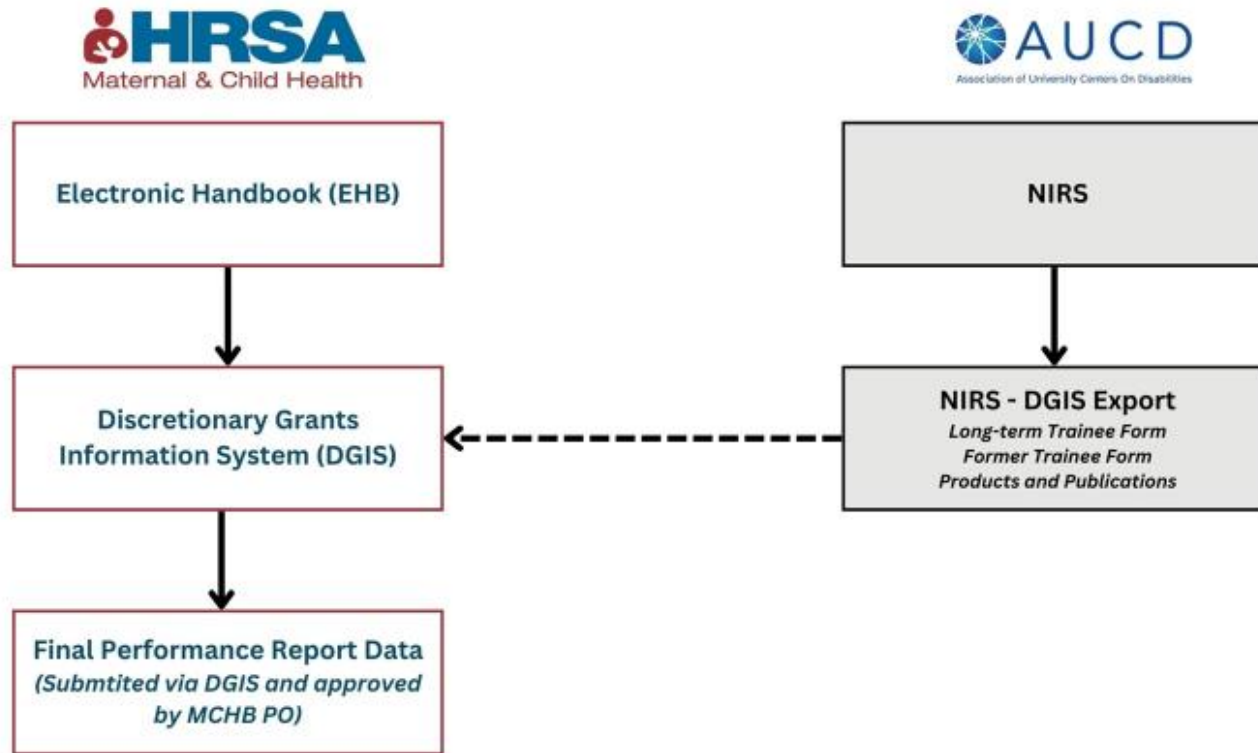
AGENDA

- Anticipated DGIS Changes
- Sexual Orientation and Gender Identity Data Collection
- Questions





Reporting System Reminders



Learn more at <https://mchb.hrsa.gov>



Discretionary Grants Information System (DGIS)

Updates:

Context for Updates

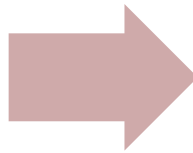
- Office of Management and Budget (OMB) review and approval required (*at least*) every three years
- Key principles across updates
 - Reduce grantee burden
 - Improve data quality
- Health equity and inclusive language



Timeline for Updates

July 1, 2023 – June 30, 2024

- Collect and report on **current** DGIS measures
- Performance report released July 1, 2024
- Due fall 2024



July 1, 2024 – June 30, 2025

- Collect and report on **new** DGIS measures
- Performance report released July 1, 2025
- Due fall 2025



Ongoing technical assistance on new DGIS measures for MCHB-funded programs

Learn more at <https://mchb.hrsa.gov>



Summary of Proposed Changes

- Three MCHB-wide forms
 - Abstract, financial, health equity
- Shift to “activity” forms across MCHB (assigned as relevant)
 - New “Engagement of Persons with Lived Experience” form
 - Updated forms to collect CE and TA

OMB Number: 0915-0298 - Revision
Expiration Date: 8/31/2025

Engagement of Persons with Lived Experience

Engagement of Persons with Lived Experience	
Instructions	
Select Yes or No to indicate whether your program supported engagement of family members and/or other persons with lived experience during the reporting period. If your program supported both, select Yes for both, and complete Part A and Part B. If your program only supported engagement of family members, select Yes for family members only and complete Part A. If your program only supported engagement of other persons with lived experience, select Yes for other persons with lived experience and complete Part B. If your program did not support either, select No and the form is complete.	
Part A. Family Engagement	
i.	For each engagement area, indicate whether your program engaged family members during the reporting period and, if yes, enter the number of family members engaged during the reporting period. Multiple individuals from within the same family unit should be counted separately (i.e., if a program engaged two parents, they should each be counted separately). The number engaged may be duplicated across rows (i.e., if a family member is engaged in both Program Development, Planning and Evaluation, as well as Leadership Training, the family member would be counted in each row).
ii.	If able, complete the table and fill in each of the cells as appropriate. This item is optional. The unduplicated row totals for race and ethnicity will be auto-calculated and may not align with the duplicated numbers presented in Table A1. When reporting data pertaining to participants' race, ethnicity, or membership in social or demographic groups—particularly groups those that are underrepresented—awardees should ensure that those data are accurate and collected validly and sensitively. Do not infer or guess individuals' membership in a particular group.
iii.	If able, enter the number engaged during the reporting period from other demographic groups that are underrepresented (for example, underrepresented factors include sexual orientation, gender identity, income/socioeconomic status, health status/disability, age, language, geography). This item is optional and should only be completed if data are collected in a valid manner that recognizes the sensitive nature of these topics.
iv.	Select Yes or No to indicate if family members were compensated for their engagement during the reporting period. Select Yes if at least one family member was compensated. If yes, and if able, enter the number of family members compensated; the item for number of family members compensated is optional.
v.	Select Yes or No to indicate whether engaging family members resulted in any changes to your program. If yes, select all the ways engagement resulted in changes to your program. Note that the form does not require you to measure or quantify the degree of change, only that it occurred. Select all that apply.
Part B. Other Persons with Lived Experience Engagement	
i.	For each engagement area, indicate whether your program engaged other persons with lived experience during the reporting period and, if yes, enter the number of other persons with lived experience engaged during the reporting period. The number engaged may be duplicated across rows (i.e., if a person with lived experience is engaged in both Program Development, Planning and Evaluation, as well as Leadership Training, the person would be counted for each row).
ii.	Indicate the population categories of persons with lived experience that the program engaged. Select all that apply.
iii.	If able, complete the table and fill in each of the cells as appropriate. This item is optional. The unduplicated row totals for race and ethnicity will be auto-calculated and may not align with the duplicated numbers presented in Table B1. When reporting data pertaining to participants' race, ethnicity, or membership in social or demographic groups—particularly groups those that are underrepresented—awardees should ensure that those data are accurate and collected validly and sensitively. Do not infer or guess individuals' membership in a particular group.
iv.	If able, enter the number engaged during the reporting period from other demographic groups that are underrepresented (for example, underrepresented factors include sexual orientation, gender identity, income/socioeconomic status, health status/disability, age, language, geography). This item is optional and should only be completed if data are collected in a valid manner that recognizes the sensitive nature of these topics.

Attachment B | 29

Learn more at <https://mchb.hrsa.gov>



Summary of Proposed Changes (Continued)

- Streamline long-term trainee data collection to reduce duplication
 - Individual-level data collection
- Remove forms that collect aggregate long-term trainee data (current and former)
 - Training 6, 10, 11, 12

OMB Number: 0915-0298 - Revision
Expiration Date: 8/31/2025

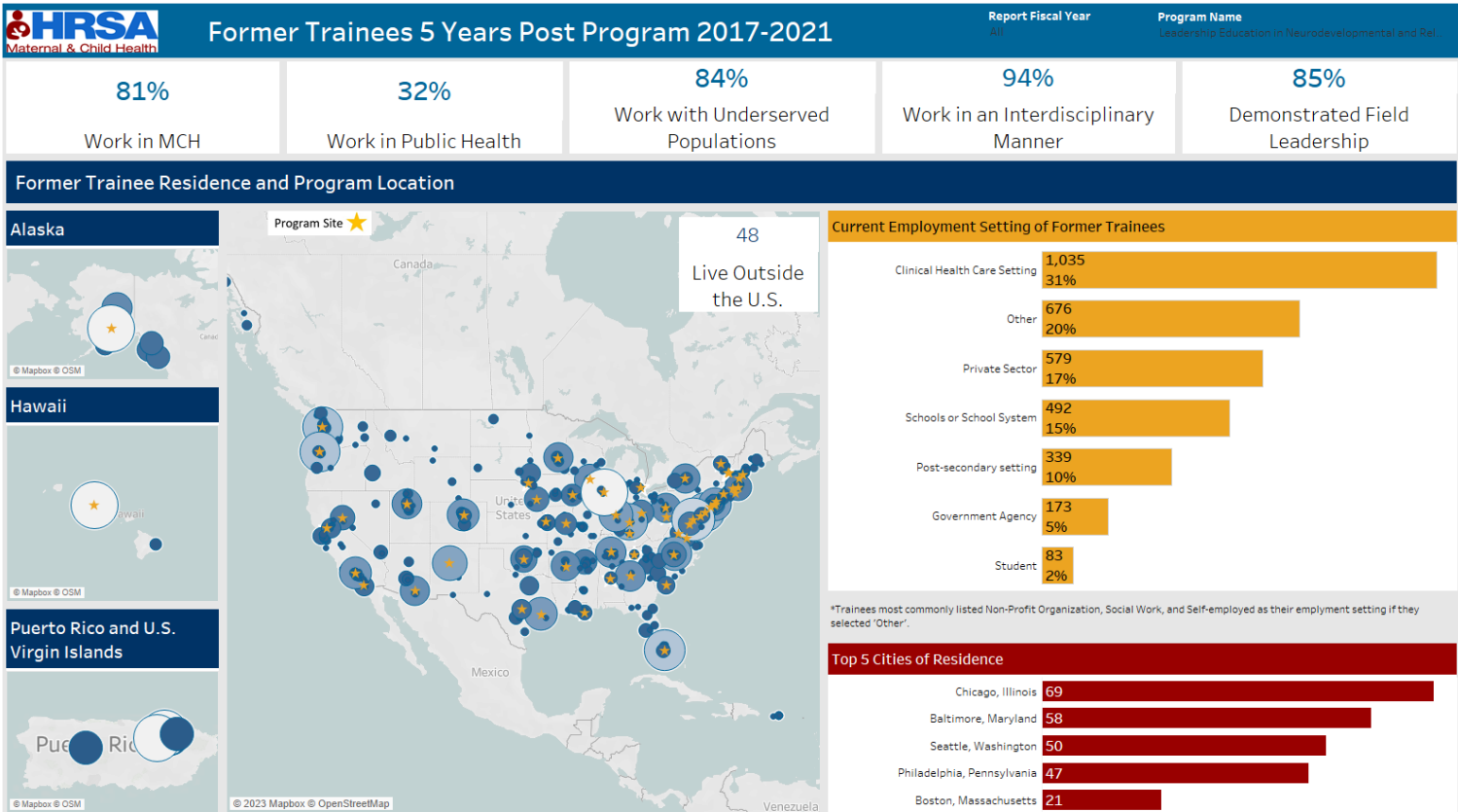
Long-Term Trainees

Long-Term Trainee Form

Long-Term Trainee Form	
Instructions	
Provide the following information for each long-term trainee (LTT) in your training program. Long-term trainees are those with greater than or equal to 300 contact hours within the training program in the reporting period who benefit from the training grant, including those who received MCH funds and those who did not.	
MCH Public Health Catalyst Programs (TIC) Instructions: MCH Public Health Catalyst programs utilize a combination of MCH coursework, practicum, and student interest group participation to define long-term trainee participation and may or may not meet the 300 contact hour threshold for LTT. On this form, Catalyst Programs should report information about Catalyst Program LTTs based on the definition established by each program. The same definition should be used consistently over time and the requirements and definition of LTTs should be included in the Comments section.	
Definitions:	
Ethnicity	<ul style="list-style-type: none">• Hispanic or Latino is defined as a person of Cuban, Mexican, Puerto Rican, South or Central American, or other Spanish culture or origin regardless of race. People who identify as Hispanic, Latino, or Spanish may be any race.
Race	<ul style="list-style-type: none">• American Indian or Alaska Native: The category "American Indian or Alaska Native" includes all individuals who identify with any of the original peoples of North and South America (including Central America) and who maintain tribal affiliation or community attachment. It includes people who identify as "American Indian" or "Alaska Native" and includes groups such as Navajo Nation, Blackfeet Tribe, Mayan, Aztec, Native Village of Barrow Inupiat Traditional Government, and Nome Eskimo Community.• Asian: The category "Asian" includes all individuals who identify with one or more nationalities or ethnic groups originating in the Far East, Southeast Asia, or the Indian subcontinent. Examples of these groups include, but are not limited to, Chinese, Filipino, Asian Indian, Vietnamese, Korean, and Japanese. The category also includes groups such as Pakistani, Cambodian, Hmong, Thai, Bengali, Mien, etc.• Black or African American: The category "Black or African American" includes all individuals who identify with one or more nationalities or ethnic groups originating in any of the black racial groups of Africa. Examples of these groups include, but are not limited to, African American, Jamaican, Haitian, Nigerian, Ethiopian, and Somali. The category also includes groups such as Ghanaian, South African, Barbadian, Kenyan, Liberian, and Bahamian.• Native Hawaiian and Pacific Islander: The category "Native Hawaiian or Other Pacific Islander" includes all individuals who identify with one or more nationalities or ethnic groups originating in Hawaii, Guam, Samoa, or other Pacific Islands. Examples of these groups include, but are not limited to, Native Hawaiian, Samoan, Chamorro, Tongan, Fijian, and Marshallese. The category also includes groups such as Palauan, Tahitian, Chuukese, Pohnpeian, Saipanese, Yapese, etc.• White: The category "White" includes all individuals who identify with one or more nationalities or ethnic groups originating in Europe, the Middle East, or North Africa. Examples of these groups include, but are not limited to, German, Irish, English, Italian, Lebanese, Egyptian, Polish, French, Iranian, Slavic, Cajun, and Chaldean.• More than One Race: This category includes individuals who identify with more than one race.



LEND Former Trainees – Where Are They Now?



Learn more at <https://mchb.hrsa.gov>



DGIS Forms

Current Forms



<https://mchb.hrsa.gov/sites/default/files/mchb/data-research/omb-0915-0298-dgis-measures-exp-08312025.pdf>

PROPOSED Future Forms



<https://mchb.hrsa.gov/sites/default/files/mchb/data-research/grant-information-system-2023.pdf>

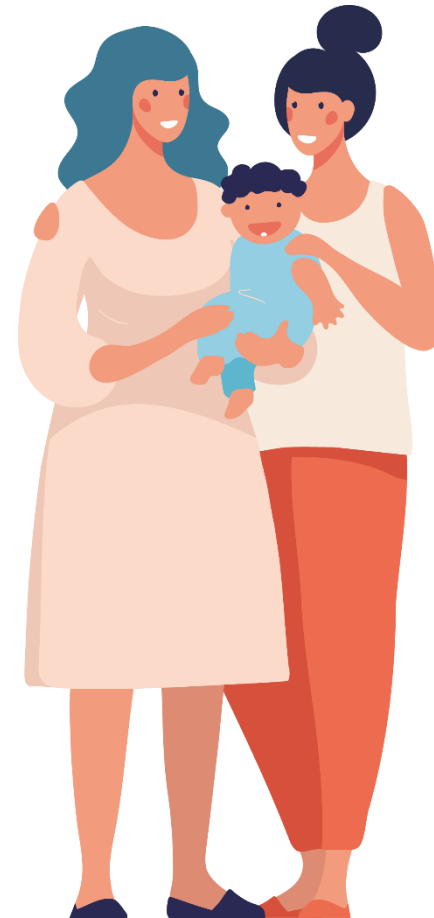
Learn more at <https://mchb.hrsa.gov>



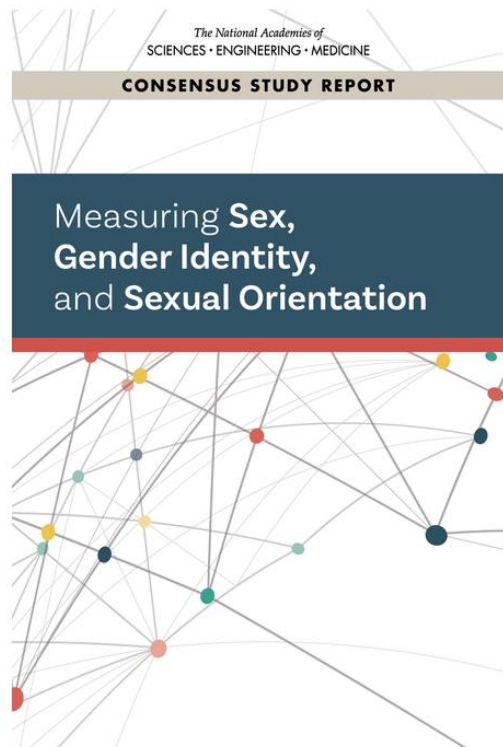
Next Steps

- Continue to collect data on current forms
- Expect additional guidance and communication from MCHB as new DGIS forms are approved (spring 2024)
- Ongoing coordination between MCHB and AUCD
- Reach out to your MCHB Project Officer with questions

Sexual Orientation and Gender Identity (SOGI) Data Collection



Learn more at <https://mchb.hrsa.gov>



x

<https://nap.nationalacademies.org/catalog/26424/measuring-sex-gender-identity-and-sexual-orientation>

Learn more at <https://mchb.hrsa.gov>



SOGI Data Collection – 2023 Updates

- “Sex” updated to “Gender” with more inclusive response options:
 - Male
 - Female
 - Transgender Man
 - Transgender Woman
 - Other
 - Choose not to disclose/unrecorded

Gender (number not percent)	
For Gender definitions, please refer the Detail Sheet Section.	
* Male	<input type="text" value="20"/>
* Female	<input type="text" value="Enter an integer: 0 - 999,999"/>
* Transgender Man	<input type="text" value="30"/>
* Transgender Woman	<input type="text" value="30"/>
* Other	<input type="text" value="30"/>
* Choose not to disclose/unrecorded	<input type="text" value="10"/>
Total	<input type="text" value="120"/> <small>This value should match the total number of trainees with 150-299 contact hours (150)</small>



Proposed Updates to SOGI Data Collection

Current Category	Proposed Update
Male	Cisgender Man
Female	Cisgender Woman
Transgender Man	<i>No changes proposed</i>
Transgender Woman	<i>No changes proposed</i>
Other	A Different Term (Specify)
Choose Not to Disclose/Unrecorded	<i>No changes proposed</i>

13. Does the trainee's current work support or serve populations that have been historically underserved or marginalized? (select all that apply)	<input type="checkbox"/> Racially/ethnically diverse populations <input type="checkbox"/> Indigenous populations <input type="checkbox"/> LGBTQ+ populations <input type="checkbox"/> Rural populations <input type="checkbox"/> Children and youth with special healthcare needs <input type="checkbox"/> People with disabilities <input type="checkbox"/> People living in poverty <input type="checkbox"/> People experiencing homelessness <input type="checkbox"/> Military veterans <input type="checkbox"/> None or unknown
14. Has the trainee done any of the following:	<input type="checkbox"/> Academic leadership activities



Reporting Resources

- **Current LEND Performance Measure Assignments:**
<https://mchb.hrsa.gov/training/documents/PM-LEND-T73-PM-Assignments-Summary.pdf>
- **DGIS User Guide:**
<https://help.hrsa.gov/display/public/EHBSKBFEG/DGIS+User+Guides+-+Reports+Created+On+or+After+May+4%2C+2023>



Reminder! DGIS Forms

Current Forms



<https://mchb.hrsa.gov/sites/default/files/mchb/data-research/omb-0915-0298-dgis-measures-exp-08312025.pdf>

PROPOSED Future Forms



<https://mchb.hrsa.gov/sites/default/files/mchb/data-research/grant-information-system-2023.pdf>

Learn more at <https://mchb.hrsa.gov>

Questions?



Learn more at <https://mchb.hrsa.gov>

Contact Information

Michelle Tissue

DMCHWD

Maternal and Child Health Bureau (MCHB)

Health Resources and Services Administration (HRSA)

Email: mtissue@hrsa.gov

Phone: 301-443-6853

Web: mchb.hrsa.gov



Learn more at <https://mchb.hrsa.gov>

Connect with HRSA

Learn more about our agency at:

www.HRSA.gov



[Sign up for the HRSA eNews](#)

FOLLOW US:





Upcoming changes for NIRS Search, Online Directory, and NIRS Resource section

- AUCD Website Redesign project
 - Research, data, and knowledge is truly the foundation of AUCD's work. NIRS is an unparalleled resource of information in this regard and should be perceived as a source of knowledge to whomever needs it.
 - NIRS Search, Online Directory, and NIRS Online Resources



Upcoming changes for NIRS Search, Online Directory, and NIRS Resource section (cont.)

Software development project: Tree swing risk



How the client described it



How the architect envisioned it



How the engineer designed it



What the budget allowed



How the liability insurance agent described it



How the estimator bid it



How the manufacturer made it



What the building inspector expected



How the contractor installed it



What the customer really wanted



How the project was documented



How the customer was billed



Upcoming changes for NIRS Search, Online Directory, and NIRS Resource section (cont.)

Search NIRS Datasets

Search across AUCD NETWORK on records of major initiatives of the Centers (projects), and records on various materials produced and disseminated by the network (products). Connect with centers and faculty and staff related to those records. [TBD Statement About IDDRRC/ Browse Centers + CORE](#) [Links go here](#)

Keywords: One or more of these keywords Exact Match

State(s)/Territories:

What are you searching for? Projects and Products has a set of filters that you can apply to narrow down your search results. Selecting no option will return no results.

Project
 Product

Network Centers: Select Centers/Programs by Program Type or select individual centers to narrow down your search. You will search across ALL centers.

UCEDD
 LEND

OR Select Individual Center(s)

Year(s):

It is recommended to select "Most Recent Complete Data Year" to receive the most complete recent information.
Tip: You can add multiple years.

COVID-19 Related Data: Note: the search will pull data if the Center makes the decision to use that tag.

select only data marked as COVID-19 related



Upcoming changes for NIRS Search, Online Directory, and NIRS Resource section (cont.)

Network Online Directory

Community Inclusion | MCH Engagement | Public Health | Emerging Leaders Community | Donate | Search

AUCD
Association of University Centers on Disabilities

About Us | Get Involved | Policy & Advocacy | News | Events

Etiam id ullamcorper sem. Integer ac erat sem. Integer interdum sapien quis nunc lacinia efficitur. Praesent rhoncus urna nec diam venenatis, ac porta lectus rhoncus. Praesent sit amet lacinia ante, vitae congue magna. Maecenas non lacinia dui, non lobortis turpis. Maecenas pharetra luctus risus vitae laculis.

67 University Centers for Excellence in Developmental Disabilities (UCEDD)
[Learn more about UCEEDS >](#)

60 Leadership Education in Neurodevelopmental Disabilities (LEND) programs
[Learn more about LENDs >](#)

16 Eunice Kennedy Shriver Intellectual and Developmental Disability Research Centers (IDDRC)
[Learn more about IDDRCs >](#)

CENTERS/PROGRAMS
Browse or Search Centers/Programs in the AUCD Network. Text is TBD
[View the Full List of Centers](#)
or Search
STATE: MARYLAND, COLORADO
[Search Programs >](#)

EXPERTS
Find Experts among the Network members.
Discipline
Expertise
Name (first or last)
State(s)
[Search Experts >](#)

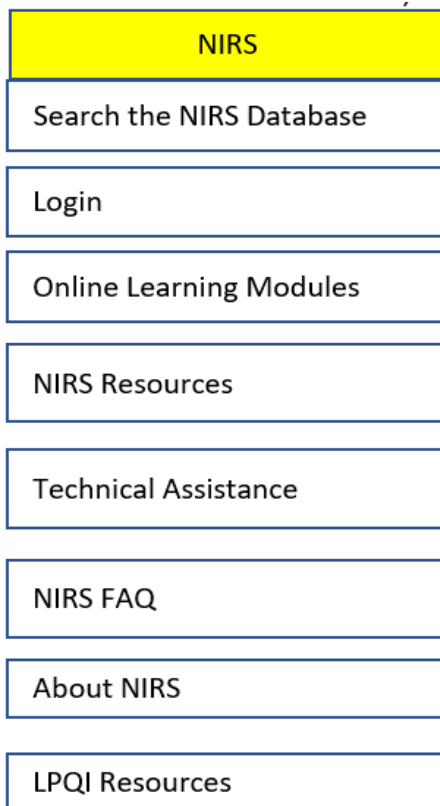
PROJECTS & PRODUCTS
Obtain useful information about the Network work. This option is very helpful for federal agencies and fellow network members who look for information from other Centers. Text is TBD
[Search Projects & Products >](#)



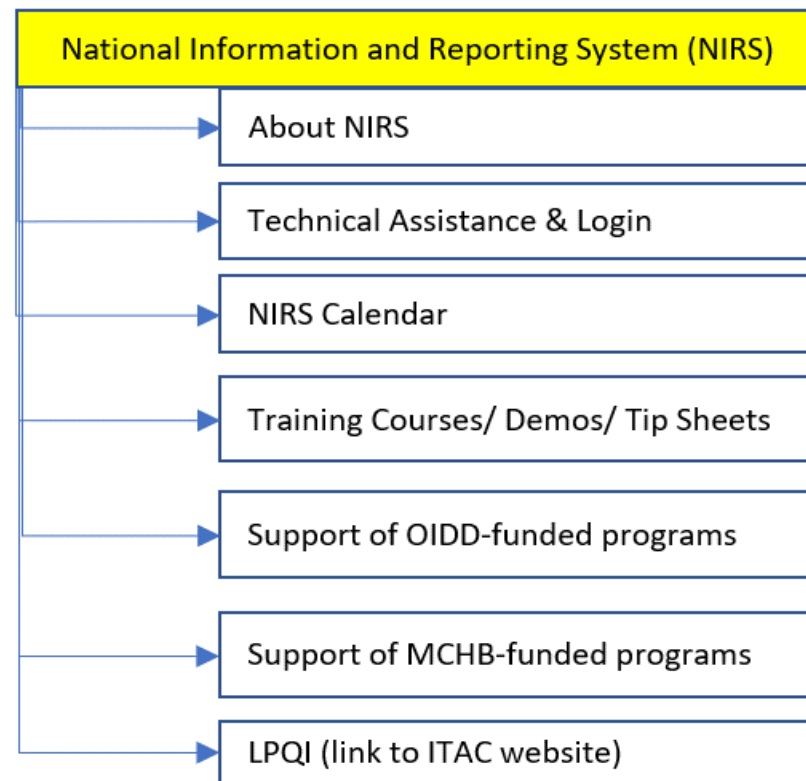
Upcoming changes for NIRS Search, Online Directory, and NIRS Resource section (cont.)

NIRS Online Resources Restructured

CURRENT



PROPOSED





Announcements

- New Resource: [Library of Custom Reports](#)
- Request to Faculty/staff to update their AUCD Online Directory profiles.
- Pilot to match with seasoned Data Coordinators.



Scan with your phone's camera to sign up to match with a seasoned data coordinator!



Breakout Sessions

- Strategies for implementation of Sexual Orientation and Gender Identity (SOGI) data Collection
- Feedback on data entry process for No-Cost Extension records in NIRS
- Strategies for using NIRS data to show the impact of the programs/centers
- Strategies for ensuring quality data entry in NIRS
- Using standard and building custom reports in NIRS



Questions & Answers





Survey:

https://www.surveymonkey.com/r/2023_Data_Coordinator_Annual_Meeting



Event Page: https://www.aucd.org/template/event.cfm?event_id=9742



NIRS

AUCD's National Information Reporting System

Contact: nirs@aucd.org

This presentation was funded by Administration for Community Living contract #75P00121C00057, and by Health Resources and Services Administration cooperative agreement #5UA5MC11068-14-00. The contents do not necessarily reflect the views or policies of the Administration on Community Living, Health Resources and Services Administration, US Department of Health and Human Services, or the US Government.

